

FOR LEASE > LOFT STYLE OFFICE SPACE

The Northern Light Tower

1010 WESTERN AVENUE, PITTSBURGH, PA 15233



Property Highlights

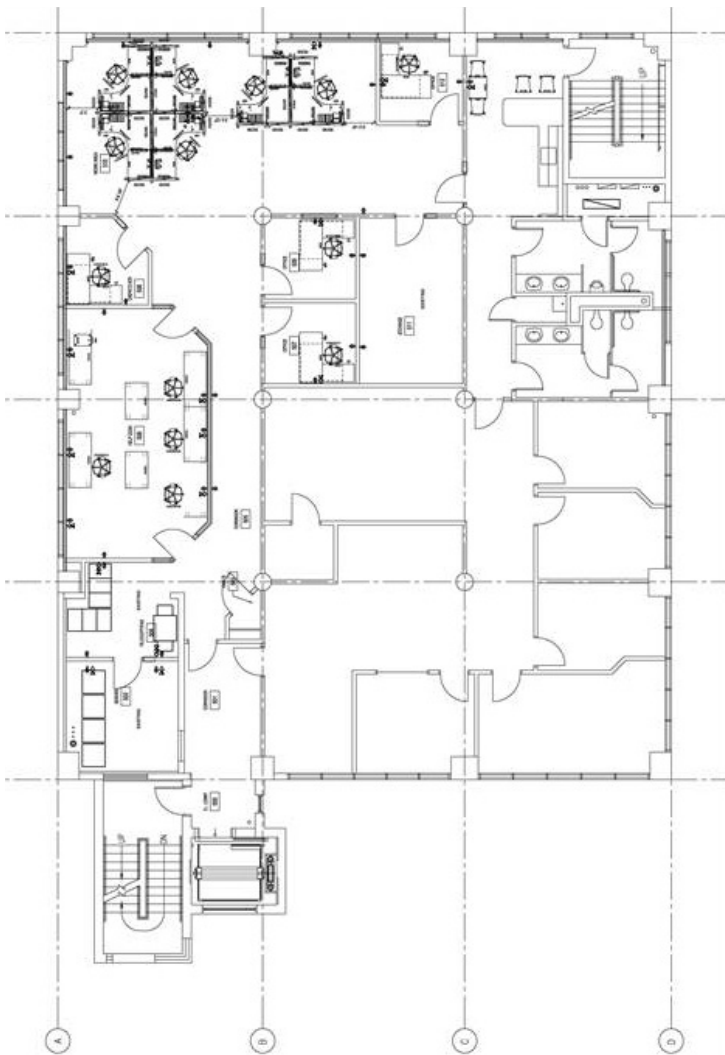
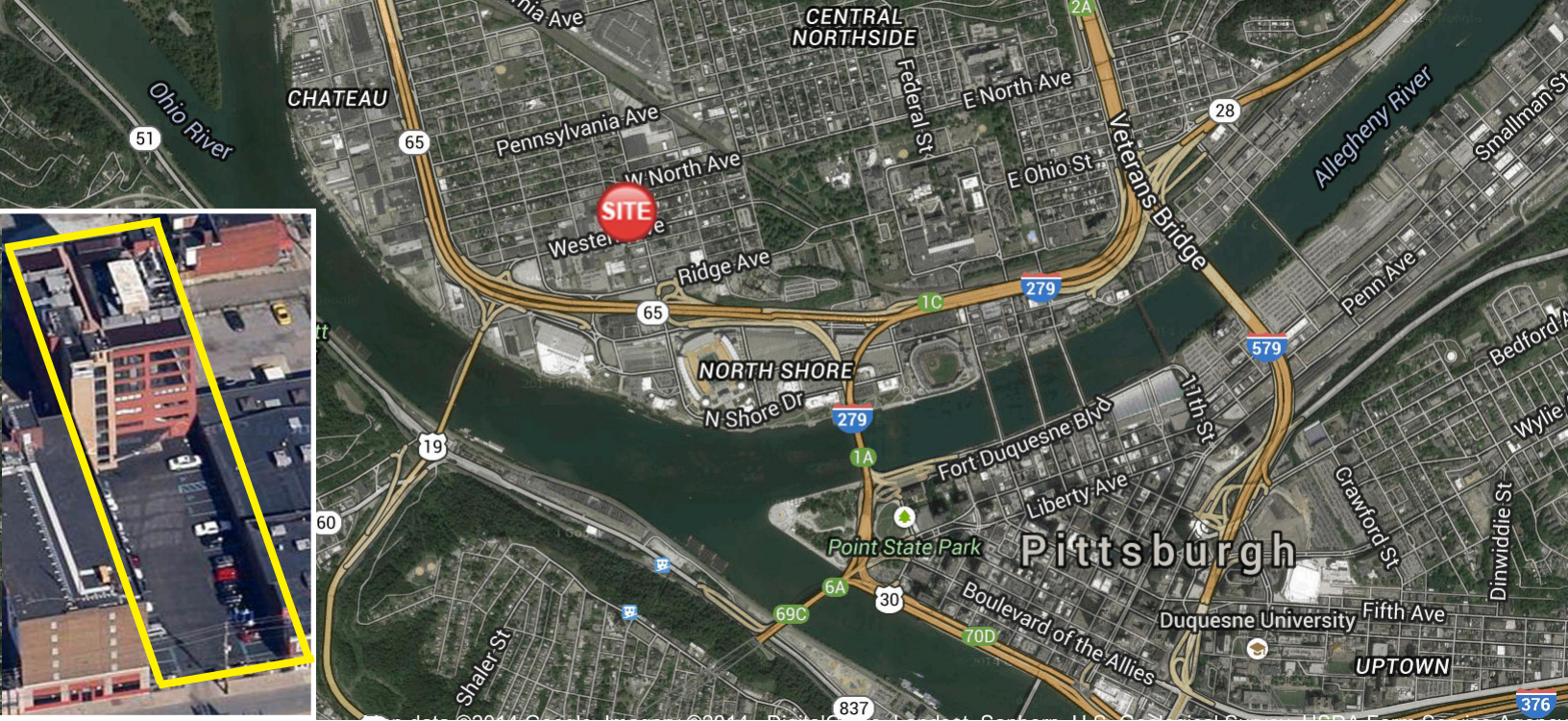
- > **5,957 RSF | Full 5th Floor**
- > **5,928 RSF | Full 7th Floor**
- > Dramatic exposed brick walls, ceilings and HVAC
- > Gated surface parking and an indoor heated executive garage
- > High tech security
- > Roof deck for exclusive tenant use and client entertainment
- > Fully equipped multimedia conference center
- > Significant natural light with breathtaking views
- > Spectacular glass walled elevator with city view
- > Easy access to Downtown, West End Bridge, Interstate 376, Interstate 279, Route 65 and Route 19
- > 1/4 mile to Heinz Field & 2 mile to PNC Park



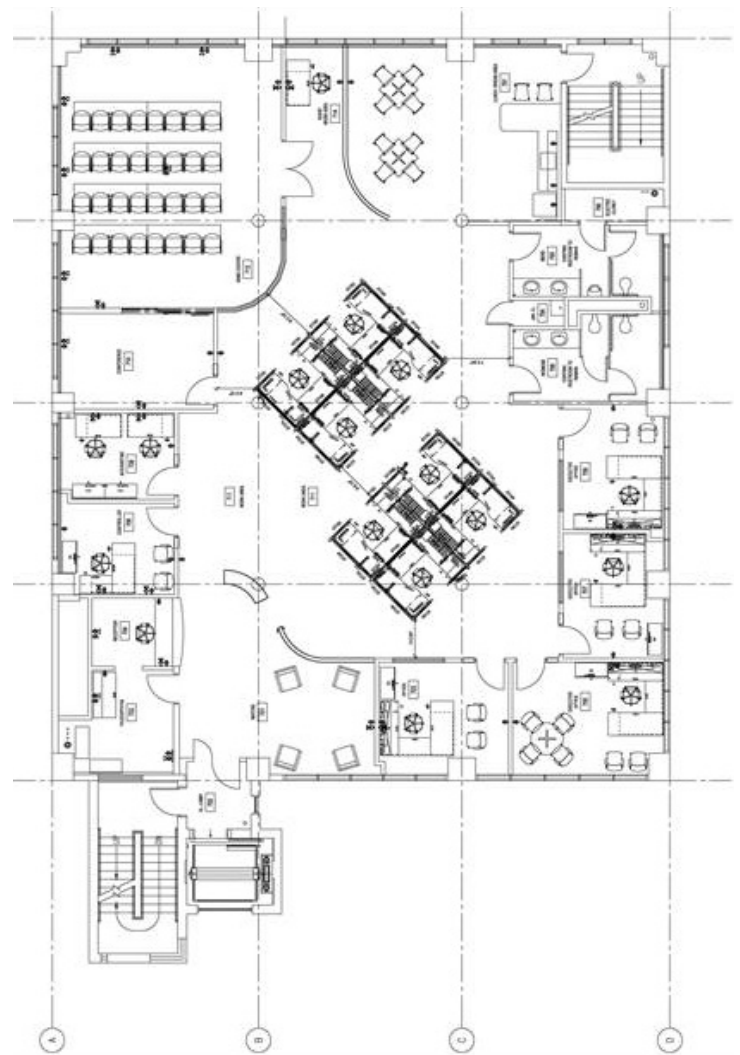
PAUL HORAN
FOUNDING PRINCIPAL | PITTSBURGH
OFFICE BROKERAGE
412 321 4200 | EXT. 205
paul.horan@colliers.com

EDWARD LAWRENCE MBA
VICE PRESIDENT | PITTSBURGH
OFFICE BROKERAGE
412 321 4200 | EXT. 213
ed.lawrence@colliers.com

COLLIERS INTERNATIONAL | PITTSBURGH
Two Gateway Center
603 Stanwix Street, Suite 125
Pittsburgh, PA 15222
www.colliers.com



5th Floor | 5,957 RSF



7th Floor | 5,928 RSF

The information contained herein has been given to us by the owner of the property or other sources we deem reliable. We have no reason to doubt its accuracy, but we do not guarantee it. All information should be verified prior to purchase or lease.

