

FOR
LEASE

119 VIP DRIVE MEDICAL OFFICE SPACE

WEXFORD, PA 15090

1,621 RSF AVAILABLE
FIRST FLOOR

Fully improved medical space



HIGHLIGHTS:

- :: Three-Story Office / Medical Building
- :: 15,000 Square Foot Building on 3 levels
- :: Existing Fully Built-Out Medical Suites Available

FOR MORE
INFORMATION
PLEASE
CONTACT

Pat Greene

Senior Vice President

+1 412 471 3017

pj.greene@cbre.com



CBRE

CBRE | U.S. Steel Tower, 48th Floor | 600 Grant Street | Pittsburgh, PA 15219 | www.cbre.com/pittsburgh

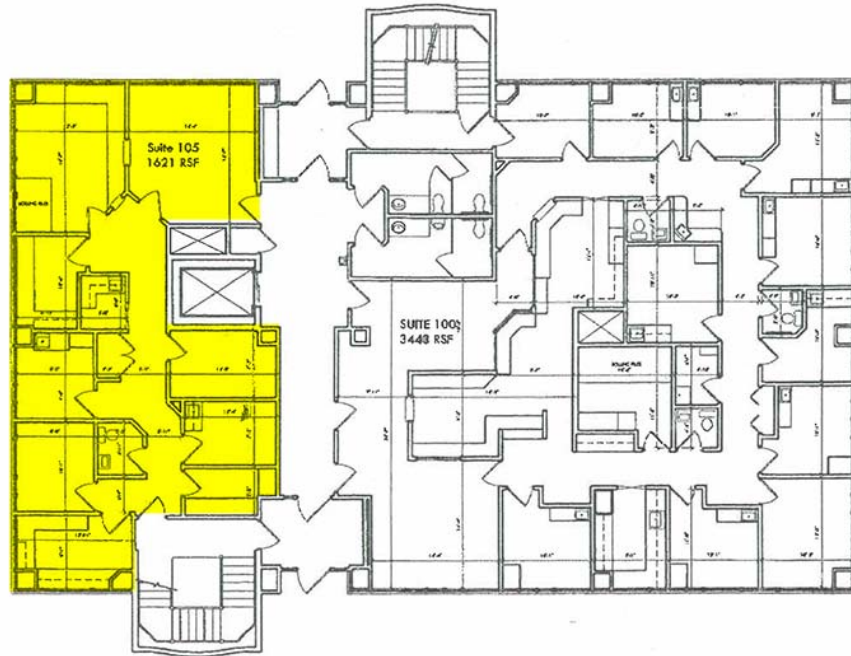
©2014 CBRE, Inc. The information above has been obtained from sources believed reliable. While we do not doubt its accuracy, we have not verified it and make no guarantee, warranty or representation about it. It is your responsibility to independently confirm its accuracy and completeness.

FOR
LEASE

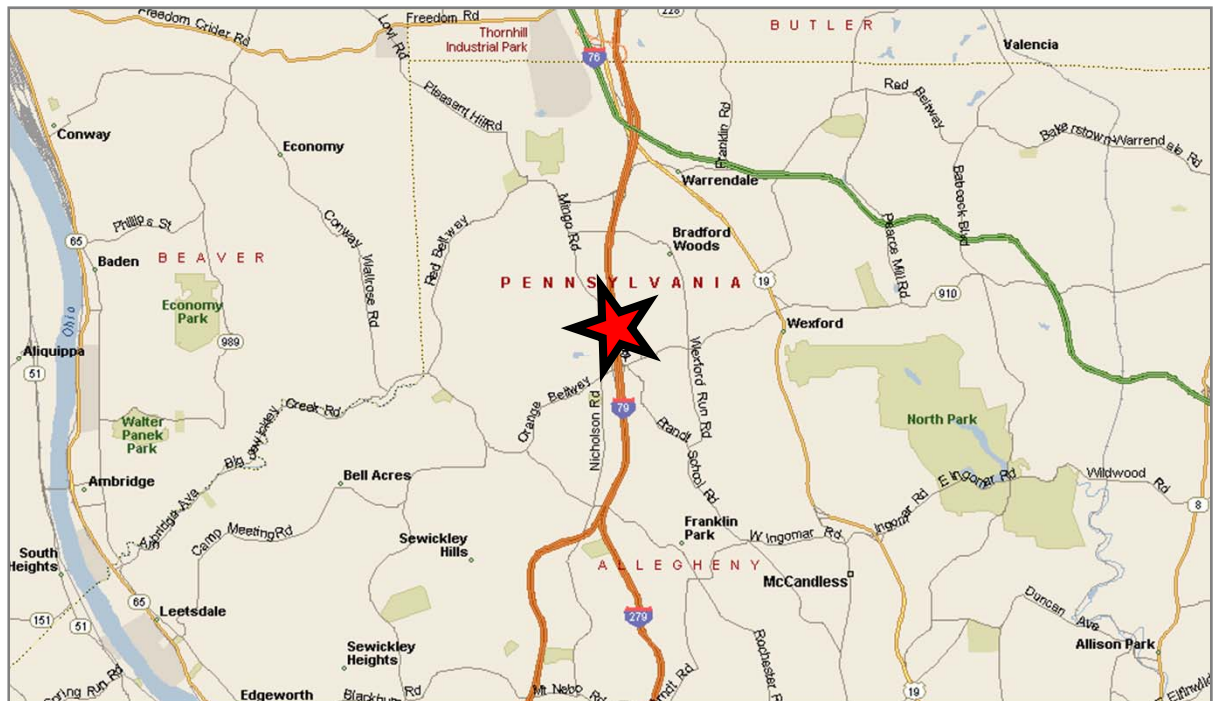
119 VIP DRIVE MEDICAL OFFICE SPACE

WEXFORD, PA 15090

FLOOR PLAN:



LOCATION MAP:



FOR MORE
INFORMATION
PLEASE
CONTACT

Pat Greene

Senior Vice President

+1 412 471 3017

pj.greene@cbre.com

CBRE

CBRE | U.S. Steel Tower, 48th Floor | 600 Grant Street | Pittsburgh, PA 15219 | www.cbre.com/pittsburgh

©2014 CBRE, Inc. The information above has been obtained from sources believed reliable. While we do not doubt its accuracy, we have not verified it and make no guarantee, warranty or representation about it. It is your responsibility to independently confirm its accuracy and completeness.